

HARYANA RURAL

All analysis based on data from 20 out of 20 districts

Enrollment

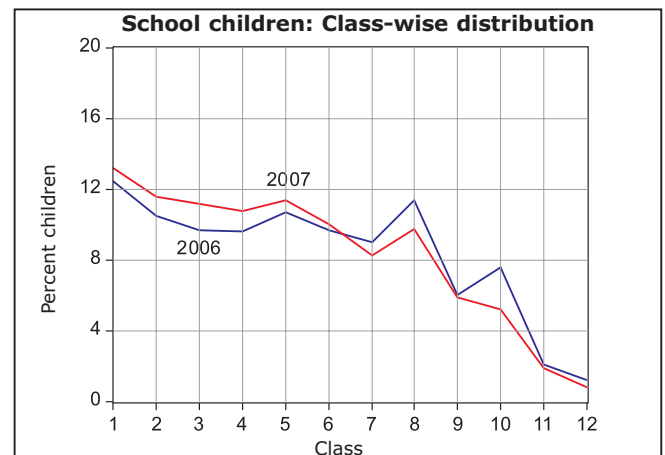
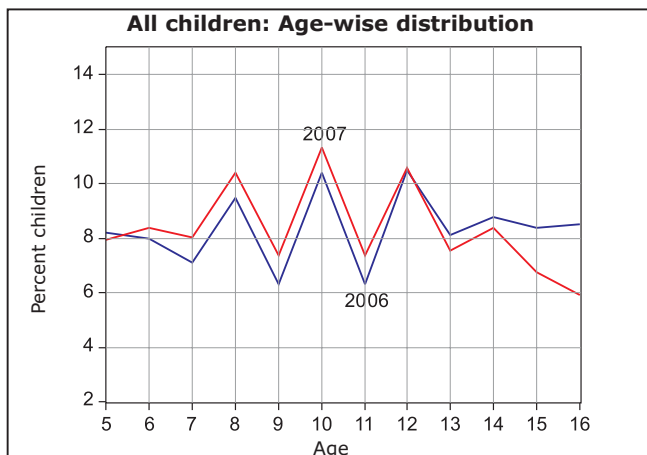
School enrollment and out of school children 2006 vs. 2007

	2006					2007				
	% Children in each age group in different types of schools				% Out of school	% Children in each age group in different types of schools				% Out of school
	Govt.	Pvt.	Other (Madarsa + EGS)	Not in School	Total	Govt.	Pvt.	Other (Madarsa + EGS)	Not in School	Total
Age: 6 -14 ALL	51.3	43.1	0.7	4.9	100	59.9	36.0	0.5	3.6	100
Age: 7-16 ALL	52.3	40.3	0.6	6.8	100	59.4	34.6	0.4	5.6	100
Age: 7- 10 ALL	50.2	45.8	0.9	3.2	100	60.5	36.9	0.5	2.2	100
Age: 7-10 BOYS	46.2	51.2	0.4	2.2	100	56.6	41.3	0.4	1.7	100
Age: 7-10 GIRLS	55.5	38.7	1.5	4.4	100	65.5	31.2	0.5	2.7	100
Age: 11-14 ALL	54.5	38.8	0.5	6.2	100	60.4	33.5	0.5	5.6	100
Age: 11-14 BOYS	51.5	43.7	0.2	4.6	100	57.6	37.7	0.4	4.4	100
Age: 11-14 GIRLS	58.5	32.4	0.8	8.4	100	64.0	28.4	0.6	7.0	100
Age: 15-16 ALL	51.9	32.4	0.6	15.1	100	53.2	30.8	0.3	15.7	100
Age: 15-16 BOYS	51.9	35.2	0.4	12.5	100	52.6	33.4	0.1	13.9	100
Age: 15-16 GIRLS	51.9	27.8	1.0	19.4	100	54.2	27.2	0.5	18.2	100

Note: "Not in school" includes children who have never gone to school or have dropped out.

Age and Class

Age-wise and class-wise distribution of children in sample



Young Children

In pre-school (Balwadi/Anganwadi) or in school 2006 vs. 2007

	2006					2007						
	In balwadi or anganwadi	% Children			Not going anywhere	Total	In balwadi or anganwadi	% Children			Not going anywhere	Total
		Govt.	Pvt.	Other School				Govt.	Pvt.	Other School		
Age: 3 ALL	72.3				27.7	100	77.5				22.5	100
Age: 4 ALL	75.4				24.6	100	76.5				23.5	100
Age: 5 ALL	31.4	20.9	35.6	0.9	11.2	100	17.0	36.6	37.3	1.0	8.2	100
Age: 6 ALL	2.1	41.2	49.0	1.1	6.6	100	3.4	51.5	40.5	0.5	4.2	100

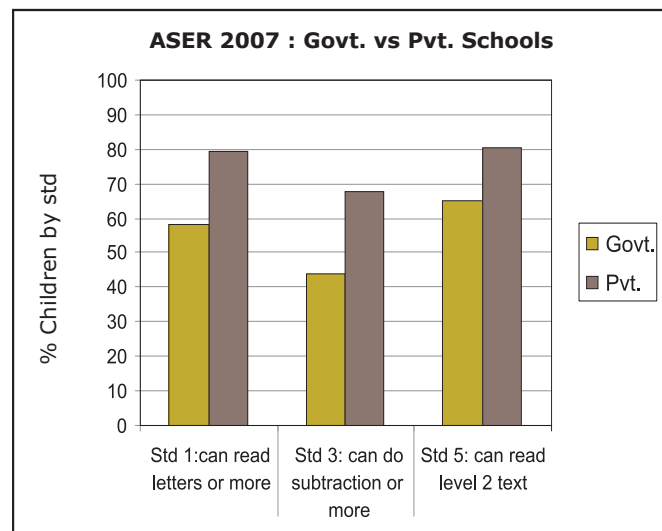
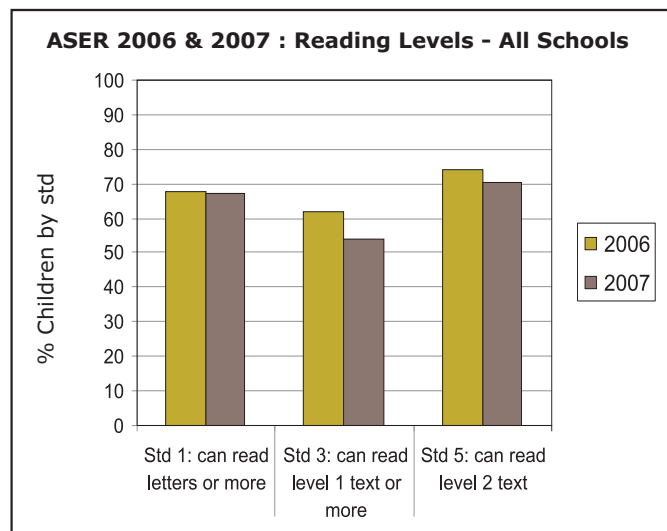
Learning Level

Reading level: % Children who can read						
Std.	Nothing	Letter	Word	Level 1 (Std 1) Text	Level 2 (Std 2) text)	Total
I	32.7	40.5	16.2	4.2	6.4	100
II	11.0	27.2	30.4	15.3	16.2	100
III	5.1	16.0	24.8	22.6	31.5	100
IV	2.6	6.7	16.3	23.7	50.8	100
V	1.6	3.0	7.5	17.4	70.5	100
VI	1.0	1.3	3.9	11.3	82.5	100
VII	1.0	1.2	1.9	7.2	88.7	100
VIII	0.5	0.7	1.4	5.5	92.0	100
Total	7.9	13.4	13.6	13.5	51.7	100

Arithmetic level: % Children who can						
Std.	Nothing	Recognize Numbers		Subtract	Divide	Total
		1-9	10-99			
I	30.6	38.6	21.2	4.9	4.8	100
II	11.2	27.3	32.2	17.8	11.6	100
III	5.7	14.2	27.4	27.8	25.0	100
IV	3.4	7.1	15.5	30.4	43.7	100
V	2.1	3.5	8.9	24.2	61.3	100
VI	1.3	1.9	5.1	17.5	74.3	100
VII	1.0	1.2	3.6	13.2	81.1	100
VIII	0.5	0.7	2.1	8.7	88.0	100
Total	7.8	13.0	15.3	18.0	45.8	100

Only subtraction and division data comparable with previous ASER.

Comparisons



English reading level: % Children who						
Std.	Cannot read capital letters	Can read capital letters	Can read small letters	Can read simple words	Can read easy sentences	Total
I	45.1	27.6	15.5	6.8	5.0	100
II	23.9	26.2	22.3	16.1	11.4	100
III	15.4	19.3	20.9	23.9	20.5	100
IV	9.2	12.6	18.8	26.4	33.0	100
V	6.2	8.1	13.1	24.6	47.9	100
VI	3.3	3.8	9.5	21.6	61.8	100
VII	1.9	3.2	7.3	15.0	72.5	100
VIII	1.2	1.7	3.9	12.4	80.9	100
Total	14.6	13.7	14.4	18.2	39.0	100

English comprehension		
Std.	Of those who can read words, % who can tell meaning of the words	Of those who can read sentences, % who can tell meaning of sentences
I	42.3	81.8
II	43.7	81.3
III	48.7	81.6
IV	58.0	84.5
V	53.3	85.3
VI	59.8	87.7
VII	61.4	91.5
VIII	53.2	90.2
Total	53.2	87.5

Comprehension & Problem solving

Ability of children by reading level to read and answer orally

Children in age group : 6 to 10				Children in age group : 11 to 14			
Reading level	% Children in specific reading level	% at each level who can orally answer questions		Reading level	% Children in specific reading level	% at each level who can orally answer questions	
		based on Std 1 level text only	based on Std 2 level text			based on Std 1 level text only	based on Std 2 level text
Word	19.3	7.0	4.6	Word	4.8	16.7	12.7
Std 1 level text	16.6	55.2	28.4	Std 1 level text	11.0	68.6	35.2
Std 2 level text	36.6	91.1	88.2	Std 2 level text	80.2	95.5	93.6

Ability of children by age to listen to a subtraction problem and answer

In-school children			
Age group	% Children who can solve		
	None	Simple problem only	Both problems
6 to 8	69.3	3.2	26.9
9 to 10	36.3	4.2	58.8
11 to 14	16.0	3.7	79.7

Children not in-school			
Age group	% Children who can solve		
	None	Simple problem only	Both problems
6 to 8	91.0	0.5	7.2
9 to 10	72.7	2.7	24.6
11 to 14	59.4	1.8	38.2

बरसात का मौसम है।
 खूब पानी बरस रहा है।
 चारों ओर पानी है।
 हम सब पानी में खेलेंगे।

प्र.1 हम सब पानी में क्या करेंगे?
 प्र.2 कौनसा मौसम है?

सावन का महीना था। आसमान में बहुत से काले बादल छाये थे। ठंडी- ठंडी हवा चल रही थी। मैंने सोचा, "आज झूला झूलते हैं।" बड़े भैया एक मोटी सी रस्सी लेकर आए। हमने उसे पेड़ से लटका कर झूला बनाया। सब ने मिलकर खूब झूला झूला। बहुत सारे बच्चे आकर मजे से खेलने लगे। खेलते-खेलते रात हो गई।

प्र.3 बड़े भैया क्या लेकर आए?
 प्र.4 हमने झूला कैसे बनाया?

(1) आपके पास 50 रुपये हैं। आपने 35 रुपये के जूते खरीदे। अब आपके पास कितने रुपये बचे हैं?

(2) आपके पास 50 रुपये हैं। आपने 23 रुपये के फल खरीदे। अब आपके पास कितने रुपये बचे हैं?

Ability of children by arithmetic level to listen to a subtraction problem and answer

Children in age group : 6 to 10				
Arithmetic level	% Children in specific arithmetic level	% Children in specific arithmetic level who can solve		
		None	Simple problem only	Both problems
Number recognition 10-99	21.1	87.2	3.8	8.5
Subtraction	21.0	45.4	8.4	44.5
Division	30.9	6.7	2.6	90.4

Children in age group : 11 to 14				
Arithmetic level	% Children in specific arithmetic level	% Children in specific arithmetic level who can solve		
		None	Simple problem only	Both problems
Number recognition 10-99	6.0	72.8	5.2	20.2
Subtraction	16.6	35.8	10.8	52.1
Division	73.1	3.0	2.1	94.7

School going children attending tuition class

Std.	% Children							
	I	II	III	IV	V	VI	VII	VIII
Govt. school	5.1	5.2	7.2	7.3	9.6	7.6	6.2	10.7
Pvt. school	11.0	11.1	14.2	14.2	17.0	16.7	16.4	19.5



School Observations: Schools visited - Primary (Std 1-4/5): 302; Primary+Upper-primary (Std 1-8): 79

Teacher attendance	2005		2007	
	Std. 1-4/5	Std. 1-8	Std. 1-4/5	Std. 1-8
% teachers attending (average)	75.3	73.6	92.5	89.5
% schools with no teacher present	2.2	1.9	0.0	0.0
% schools with all teachers present	34.8	18.9	73.6	63.4

Pupil teacher ratio (median)	2005		2007	
	Std. 1-4/5	Std. 1-8	Std. 1-4/5	Std. 1-8
Based on children enrolled & teachers appointed	36.6	32.1	36.7	29.2
Based on children & teachers present	37.3	34.4	32.4	29.2

Water/toilet and midday meal	2005		2007	
	Std. 1-4/5	Std. 1-8	Std. 1-4/5	Std. 1-8
% Schools				
Schools with no water provision	18.4	8.6	11.9	11.7
Schools with water provision but water not available	10.2	5.7	6.5	7.8
Schools with water provision and water available	71.4	85.7	81.6	80.5
Schools with no toilet provision	10.4	3.8	5.0	7.8
Schools with toilet provision but not being used	21.6	24.8	11.4	16.9
Schools with toilet provision and use	67.9	71.4	83.6	75.3
Schools with midday meal being served on that day	82.7	70.9	97.3	94.9

Note: ASER 2007 survey was carried out in October and November 2007. One govt. school with primary grades was visited in the sampled village. If there was more than one govt. school with primary grades, then the school with the highest enrollment was visited. Hence the schools visited in the survey do not represent a random sample from the district. The school visits were generally done either on a Saturday or a Monday.

Children's attendance	2005		2007	
	Std. 1-4/5	Std. 1-8	Std. 1-4/5	Std. 1-8
% enrolled children attending (average)	81.4	82.5	82.0	84.9
% schools with less than 50% enrolled children attending	1.9	0.9	2.5	0.0
% schools with 75% and more enrolled children attending	74.5	81.7	80.8	85.5

School grants and teacher grants	2006		2007*	
	Std. 2	Std. 4	Std. 2	Std. 4
% Schools				
Teacher received TLM grant	87.1	86.3	67.9	68.9
School received school maintenance grant	90.8		71.9	

Multigrade classes	2007	
	Std. 1-4/5	Std. 1-8
% Schools		
Schools in which...		
Std II class sits with another class	38.2	26.7
Std IV class sits with another class	29.8	21.9

Over 90% classes that were visited have blackboards. In over 90% of these classes, most children have textbooks, notebooks and pen or pencil.

Please note that while 2005 data was collected during ASER 2005, 2006 data reported in the Grants table was collected in ASER 2007 by asking for last year's grant information to the respondent.

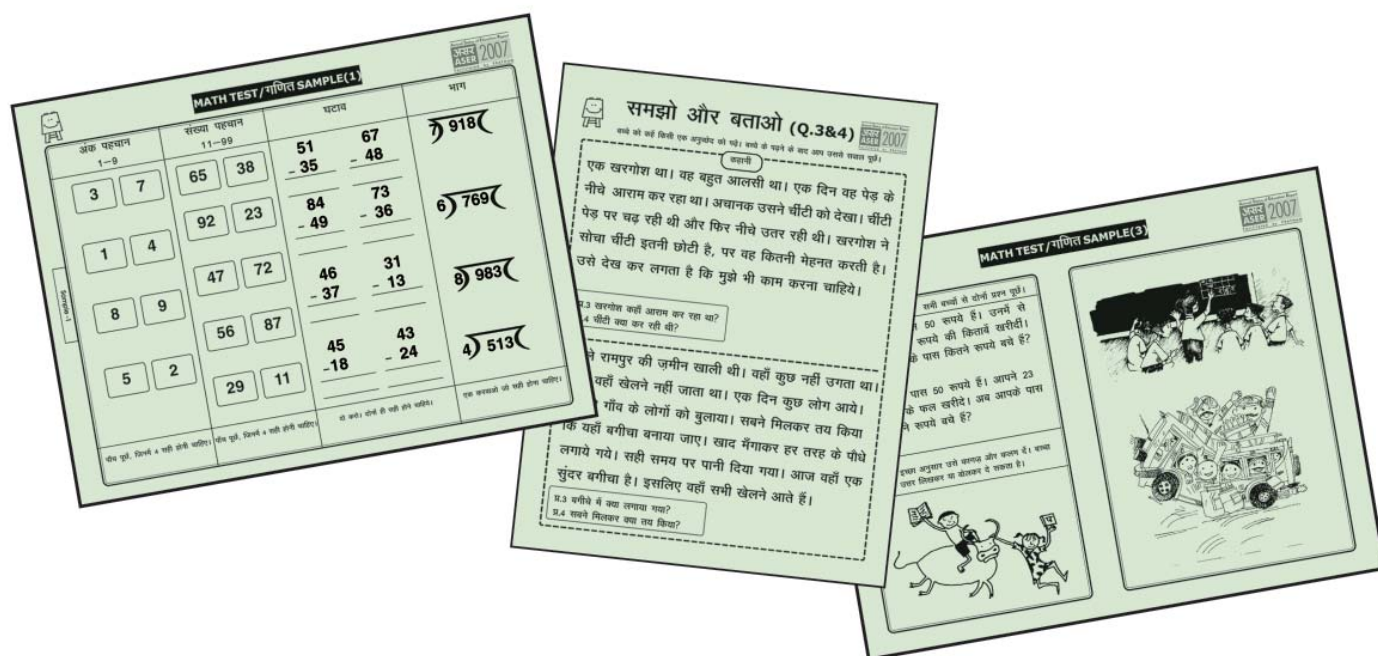
दरवाजा के दिन पिताजी ने 50 रुपये दिये
 उसमें से आपके 19 रुपये के पठारवे शरीर के
 अब आपके पास कितने रुपये बचे

$$\begin{array}{r} 50 \\ -19 \\ \hline 31 \end{array}$$

*Grants for 2007 may be lower than 2006 since the survey was conducted in the middle of the year.

Performance of districts

District	Pre- school	Out of school	Private school	Std 1-2 : Learning levels			Std 3-5 : Learning levels		
	% Children (Age 3-4) in Anganwadi or other pre-school	% Children (Age 6-14) Out of school	% Children (Age 6-14) in Private school	% Children (Std 1-2) who CAN READ letters, words or more in OWN LANGUAGE	% Children (Std 1-2) who CAN RECOGNIZE NUMBERS (1-9) or more	% Children (Std 1-2) who CAN READ letters or more in ENGLISH	% Children (Std 3-5) who CAN READ Level 1 (Std 1) text or more in OWN LANGUAGE	% Children (Std 3-5) who CAN SUBTRACT or do more	% Children (Std 3-5) who CAN READ sentences in ENGLISH
Ambala	82.6	1.0	40.3	81.6	84.2	72.0	62.9	65.1	29.5
Bhiwani*		2.7	37.7	84.4	80.5	60.4	73.4	74.9	36.0
Fatehabad	96.3	3.2	34.5	66.9	72.1	44.1	68.4	61.2	15.2
Hisar*		3.0	38.2	71.8	75.6	70.5	71.8	70.7	28.8
Jhajjar	94.2	0.7	45.3	84.7	87.2	74.2	79.4	76.5	42.1
Jind	81.8	2.6	31.0	78.3	69.7	59.1	66.4	65.0	28.9
Kaithal	83.3	3.0	40.2	84.0	83.1	77.5	69.2	73.9	44.8
Karnal	83.6	4.3	29.7	72.5	76.3	57.0	62.9	61.6	14.0
Kurukshetra*		2.1	37.3	80.4	83.6	82.9	67.5	67.6	51.3
Mahendragarh	90.6	1.8	42.2	76.8	78.2	64.9	79.7	77.8	47.2
Panchkula	93.6	1.6	20.3	88.3	94.4	87.2	81.7	93.4	34.4
Panipat*		1.7	38.4	85.1	87.4	74.9	81.1	74.9	36.3
Rewari	83.8	1.4	44.7	89.0	89.0	74.2	87.4	87.2	62.4
Rohtak*		2.0	48.1	87.5	87.4	81.7	75.6	73.1	42.0
Sirsa	63.0	4.5	31.8	85.4	85.6	67.5	70.9	72.4	35.3
Sonipat	90.8	1.9	45.5	95.7	93.4	89.4	85.6	86.7	51.4
Yamunanagar	74.1	3.9	32.2	68.4	76.8	51.0	67.5	65.8	30.4
Mewat	39.6	14.9	14.4	58.7	61.4	42.3	58.8	47.7	16.0
Faridabad	50.3	4.0	45.3	65.2	67.3	55.9	75.1	75.4	27.3
Gurgaon	83.4	3.0	25.7	78.6	79.1	54.7	78.1	76.7	14.3
Total	77.1	3.6	36.0	77.5	78.6	64.9	72.2	70.9	33.9



* Blank cells indicate insufficient data.